

TABLE II - CABLE ENTRY DIMENSIONS						
CABLE ENTRY DES.	J	K	L	S (NO. OF SLOTS)	V	U
31	0.188	0.312	0.512	(1) 0.170	0.250	0.125
02	0.250	0.375	0.575	(1) 0.170	0.250	0.125
32	0.312	0.438	0.638	(1) 0.170	0.281	0.125
03	0.375	0.500	0.700	(2) 0.250	0.310	0.155
33	0.438	0.562	0.762	(2) 0.250	0.310	0.155
04	0.500	0.625	0.825	(2) 0.250	0.375	0.219
34	0.562	0.688	0.888	(2) 0.250	0.375	0.219
05	0.625	0.750	0.950	(2) 0.500	0.375	0.219

TABLE I - BASIC DIMENSIONS					
SHELL SIZE	A (MAX)	B	C	MAX ENTRY	F (MIN)
1	1.25	0.53	0.984	33*	1.00
2	1.58	0.53	1.312	33*	1.00
3	2.13	0.53	1.852	33*	1.00
4	2.77	0.53	2.500	33*	1.00
5	2.68	0.66	2.406	04*	1.00
6	2.77	0.73	2.500	05*	1.00

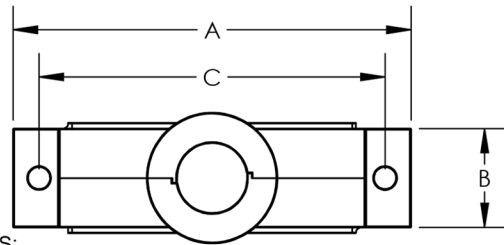
REVISION HISTORY			
REV	DESCRIPTION	DATE	APPROVED
E	Split Shell Assembly	6/24/26	

D

C

B

A



NOTES:

- ISODYNE TO PROVIDE SPRING BAND, STANDARD MATERIAL: 301 STAINLESS STEEL.
- ADAPTER, MATERIAL: ALUMINUM ALLOY 6061-T6.
- EACH HALF IS TONGUE & GROOVE FOR EMI COMPLIANCE, MFG OPTION.
- APPLICABLE STANDARDS / SPECIFICATIONS
A. DWG INTERPRETATION: ASME Y14. 100;
B. DIMENSIONING & TOLERANCING: ASME Y14.5-2009;
- MARK VENDOR PART NUMBER & CAGE CODE.
- RAISED RIDGES OR KNURL, MFG OPTION.
- DIMENSIONAL LIMITS APPLY AFTER FINISH.
- DRAWING IS SUPPORTED BY ELECTRONIC SOLID MODEL, DRAWING MAY NOT BE FULLY DIMENSIONED.
- * FOR CABLE ENTRIES EXCEEDING MAXIMUM CONSULT FACTORY FOR DETAILS.

PART # BREAKOUT: ISO I 206 NF 3 02 B K G -S -N

ISODYNE IDENT _____

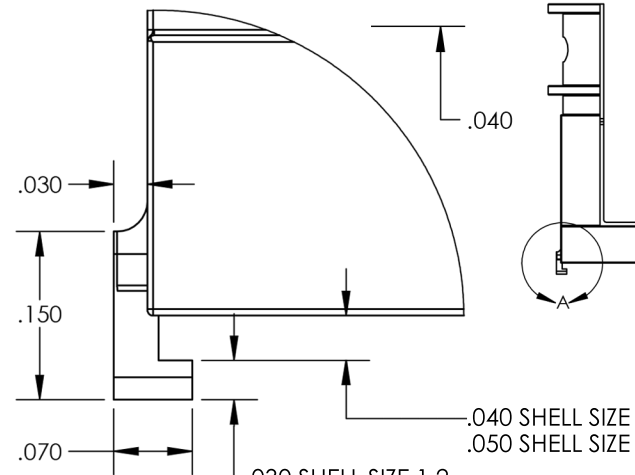
TOP ENTRY _____

PRODUCT SERIES _____

FINISH TABLE III _____

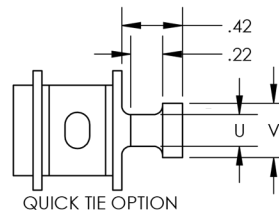
SHELL SIZE TABLE I _____

CABLE ENTRY TABLE II _____



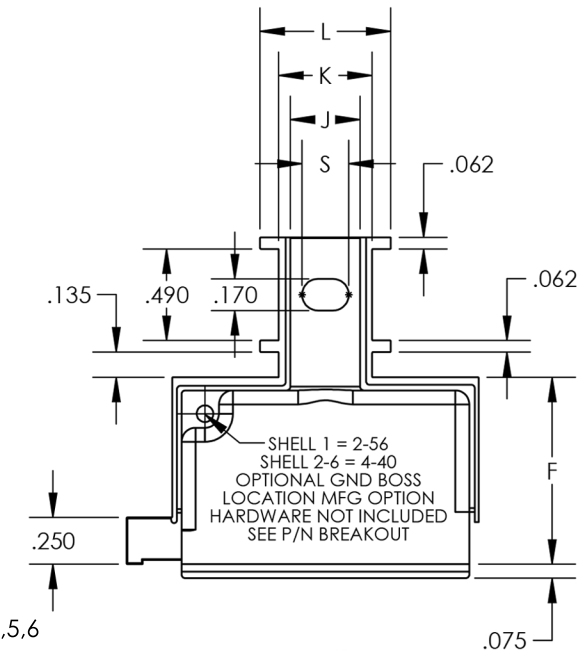
DETAIL A

.030 SHELL SIZE 1,2
.020 SHELL SIZE 3,4,5,6



QUICK TIE OPTION

ISO VIEW, CONNECTOR & HARDWARE SHOWN FOR REFERENCE ONLY



NOTE 6

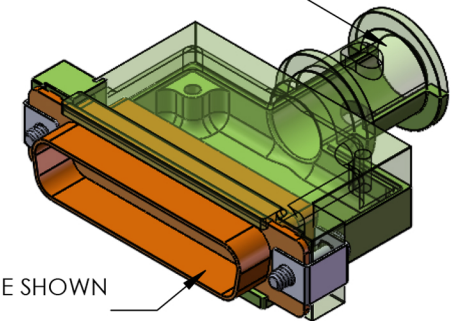


TABLE III MATERIAL FINISH	
M	ELECTROLESS NICKEL
NF	CAD/OD OVER ELECTROLESS NICKEL (500 HR. SALT SPRAY)

HARDWARE OPTOIN (OMIT FOR SOCKET HEAD)

B= MALE FILLESTER W / CLIP
H= HEX HEAD W / CLIP
S= THUMB SCREW W / CLIP
F= FEMALE JACK POST W / LOCKWASHER & NUT, THREAD LENGTH (.450) INCHES
F2= FEMALE JACK POST W / LOCKWASHER & NUT, THREAD LENGTH (.625) INCHES

	NAME	DATE
DRAFTER	jmangus	6/24/26
TOLERANCE: {UNLESS OTHERWISE NOTED}		
2 PLACE DEC ±.030		
3 PLACE DEC ±.015		
ANGULAR = ± 2°		
UNLESS OTHERWISE SPECIFIED DIMENSIONS ARE IN INCHES		



7706 E. OSIE - WICHITA, KS. 67207
www.isodyneinc.com

ISODYNE PART NUMBER:
ISO206
U.S. PATENT # 5,769,665
CAGE CODE # 031M6