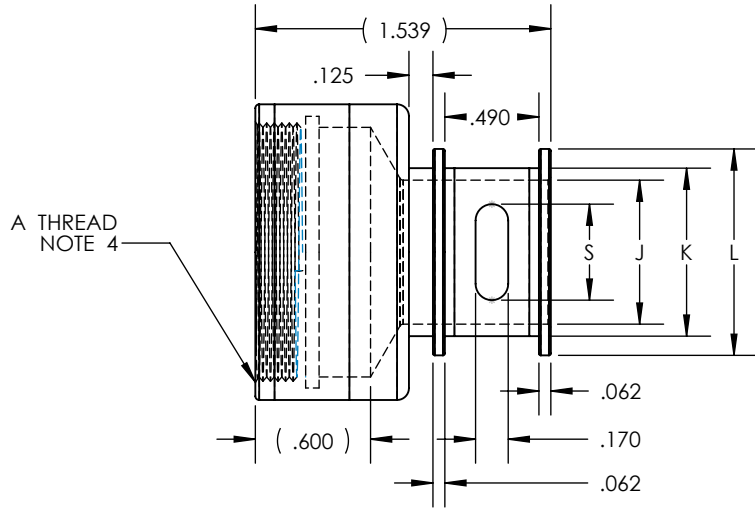


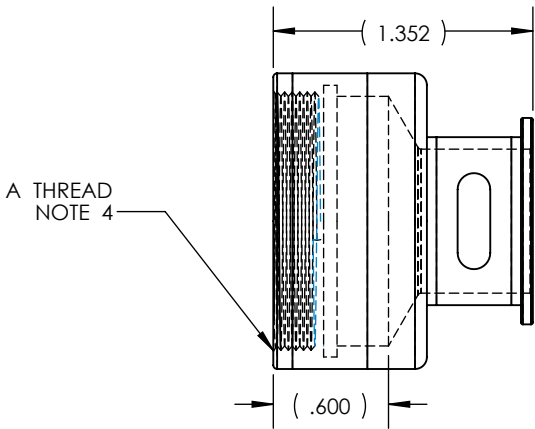
NOTES:

1. ISODYNE TO PROVIDE SPRING BAND.
2. KNURL STYLE IS MFG OPTION.
3. MFG TO PROVIDE O-RING.
4. SEE TABLE I FOR THREAD DEPTH INTERFACE.
5. OPTIONAL THREAD LOCK RECOMMENDED PER INTERNAL ASSEMBLY PROCESS & PROCEDURES.
6. DRAWING IS SUPPORTED BY ELECTRONIC FILE, DRAWING IS NOT FULLY DIMENSIONED.

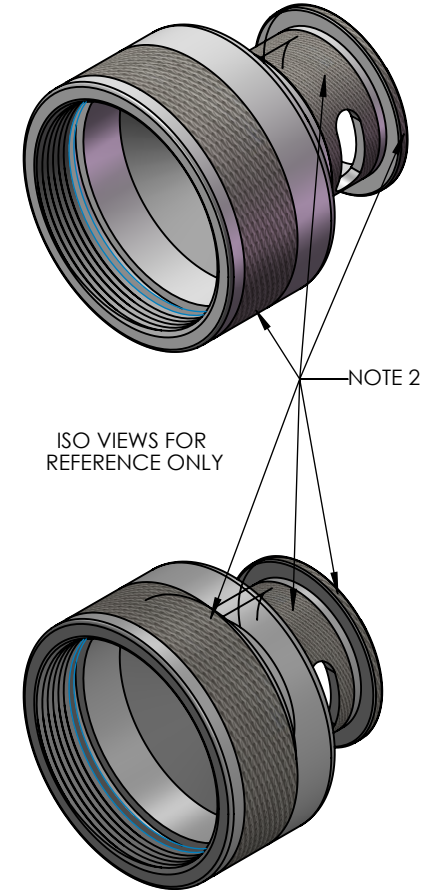
REVISION HISTORY			
REV	DESCRIPTION	DATE	APPROVED
D	Complete Assembly	09/24/12	



SHOWN WITH,
BOOT GROOVE &
SLOT OPTION.



SHOWN WITHOUT,
BOOT GROOVE.



ISO 101 H NF 09 02 -B -S

ISODYNE IDENT _____

SERIES (Straight Only) _____

CONNECTOR CODE (Table IV) _____

FINISH (Table II) _____

SHELL SIZE (Table I) _____

CABLE ENTRY (Table III) _____

Optional BOOT GROOVE (Omit for None) _____

Optional SLOT (Omit for None) _____

	NAME	DATE
DRAFTER	acarter	09/13/11
TOLERANCE: {UNLESS OTHERWISE NOTED}		
2 PLACE DEC ± .030		
3 PLACE DEC ± .015		
ANGULAR = ± 2°		
UNLESS OTHERWISE SPECIFIED DIMENSIONS ARE IN INCHES		

ISODYNE
7706 E. OSIE - WICHITA, KS. 67207
www.isodyneinc.com

ISODYNE PART NUMBER:
ISO101
U.S. PATENT # 5,769,665
CAGE CODE # 031M6

TABLE I						
SHELL SIZE CONN DES A	SHELL SIZE CONN DES F	SHELL SIZE CONN DES H	A THREAD	THREAD DEPTH FROM ADAPTER INTERFACE	TORQUE IN/LBS ±5	MAX ENTRY
8	08/[09]		1/2 - 20 UNF	0.225 +0.000 -0.022	72	02
			7/16 - 28 UNF	0.188 ±.015	72	
		09	M12 X 1 - 6H	0.177 ±.015	72	
3			9/16 - 24 UNEF	0.225 +0.000 -0.022	108	03
10			5/8 - 24 UNEF	0.225 +0.000 -0.022	108	
	10/[11]		9/16 - 24 UNEF	0.188 ±.015	108	
		11	M15 X 1 - 6H	0.177 ±.015	108	04
12/7			3/4 - 20 UNEF	0.225 +0.000 -0.022	120	
	12/[13]		11/16 - 24 UNEF	0.188 ±.015	120	
		13	M18 X 1 - 6H	0.177 ±.015	120	05
14/12			7/8 - 20 UNEF	0.225 +0.000 -0.022	144	
	14/[15]		13/16 - 20 UNEF	0.188 ±.015	144	
		15	M22 X 1 - 6H	0.177 ±.015	144	06
16/19			1 - 20 UNEF	0.225 +0.000 -0.022	144	
	16/[17]		15/16 - 20 UNEF	0.188 ±.015	144	
		17	M25 X 1 - 6H	0.177 ±.015	144	07
18/27			1-1/16 - 18 UNEF	0.225 +0.000 -0.022	144	
	18/[19]		1-1/16 - 18 UNEF	0.188 ±.015	144	
		19	M28 X 1 - 6H	0.177 ±.015	144	08
20/37			1-3/16 - 18 UNEF	0.225 +0.000 -0.022	180	
	20/[21]		1-3/16 - 18 UNEF	0.188 ±.015	180	
		21	M31 X 1 - 6H	0.177 ±.015	180	10
22			1-5/16 18 UNEF	0.225 +0.000 -0.022	180	
	22/[23]		1-5/16 18 UNEF	0.188 ±.015	180	
		23	M34 X 1 - 6H	0.177 ±.015	180	11
24			1-7/16 - 18 UNEF	0.225 +0.000 -0.022	180	
	24/[25]		1-7/16 - 18 UNEF	0.188 ±.015	180	
		25	M37 X 1 - 6H	0.177 ±.015	180	

TABLE IV		
CONN DES	CONNECTOR SPECIFICATION	SERIES
H	MIL-C-38999	III & IV
F	MIL-C-38999	I & II
	40M38277	
	NFC 93422	HE 309
	NFC 93422	HE 308
	PAN 6433-1	
	PATT 614	
A	PATT 616	
	MIL-C-5015	MS3400
	MIL-C-26482	II
	MIL-C-81703	III
	MIL-C-83723	I & III
	DEF 5926-3	
	LN 29504	
	NFC 93422	HE 302
	PAN 6432-1	
	PAN 6432-2	HE 304
	PATT 602	HE 305

TABLE II MATERIAL FINISH	
B	CADMIUM PLATE/OLIVE DRAB
C*	ANODIZE/BLACK
G*	HARD COAT
J	GOLD IRIDITE OVER CADMIUM PLATE OVER NICKEL
LF	CADMIUM PLATE/BRIGHT OVER ELECTROLESS NICKEL
M	ELECTROLESS NICKEL
N	CADMIUM PLATE/OLIVE DRAB OVER NICKEL
NF	CAD/OD OVER ELECTROLESS NICKEL (500 HR. SALT SPRAY)
NT	NICKEL/TEFLON - CONSULT FACTORY FOR DETAILS
T	CADMIUM PLATE/BRIGHT DMP OVER NICKEL
U**	CADMIUM PLATE/BLACK
Z1**	PASSIVATE SS
ZN	ZINC NICKEL/OD OVER ELECTROLESS NICKEL
ZNU	ALUMINUM/ZINC-NICKEL WITH BLACK CHROMATE

REVISION HISTORY				
REV	DESCRIPTION	DATE	APPROVED	
D	Complete Assembly	09/24/12		

TABLE III - CABLE ENTRY DIMENSIONS				
CABLE ENTRY DES.	J	K	L	S NO. OF SLOTS (OPTIONAL)
01	0.125	0.250	0.450	(1) 0.170
31	0.188	0.312	0.512	(1) 0.170
02	0.250	0.375	0.575	(1) 0.170
32	0.312	0.438	0.638	(1) 0.170
03	0.375	0.500	0.700	(2) 0.250
33	0.438	0.562	0.762	(2) 0.250
04	0.500	0.625	0.825	(2) 0.250
34	0.562	0.688	0.888	(2) 0.250
05	0.625	0.750	0.950	(2) 0.500
35	0.688	0.812	1.012	(2) 0.500
06	0.750	0.875	1.075	(2) 0.500
36	0.812	0.938	1.138	(2) 0.500
07	0.875	1.000	1.200	(4) 0.500
37	0.938	1.062	1.262	(4) 0.500
08	1.000	1.125	1.325	(4) 0.500
38	1.062	1.188	1.388	(4) 0.500
09	1.125	1.250	1.450	(4) 0.750
10	1.250	1.375	1.578	(4) 0.750
11	1.375	1.500	1.700	(4) 0.750

* NON-CONDUCTIVE FINISH - NOT SUITABLE FOR EMI/RFI.
 ** APPLICABLE TO CORROSION RESISTING STEEL BACKSHELLS & ACCESSORIES.

	NAME	DATE	 7706 E. OSIE - WICHITA, KS. 67207 www.isodyneinc.com ISODYNE PART NUMBER: ISO101 U.S. PATENT # 5,769,665 CAGE CODE # 031M6
DRAFTER	acarter	09/13/11	
TOLERANCE: {UNLESS OTHERWISE NOTED} 2 PLACE DEC ±.030 3 PLACE DEC ±.015 ANGULAR = ± 2°			
UNLESS OTHERWISE SPECIFIED DIMENSIONS ARE IN INCHES			